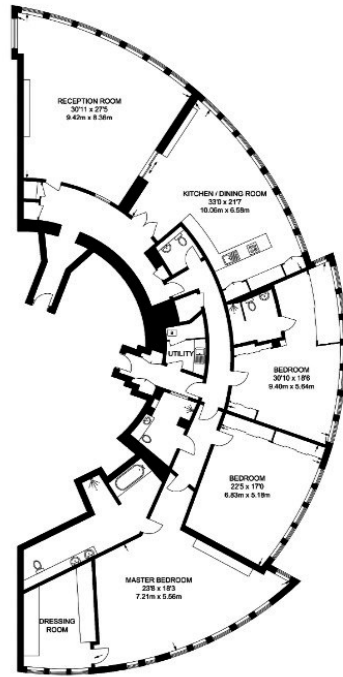




## The Tower, St. George Wharf, Vauxhall SW8 2BW

£5,000

- 24/7 concierge
- swimming pool overlooking River
- smart home system
- 3300 sq feet apartment
- business lounge and cinema
- gym / spa
- valet parking
- meeting room / dining room
- gated development
- under floor heating and air cooling



APPROXIMATE GROSS INTERNAL AREA  
3370 SQ FT / 313.1 SQ M

### Viewings

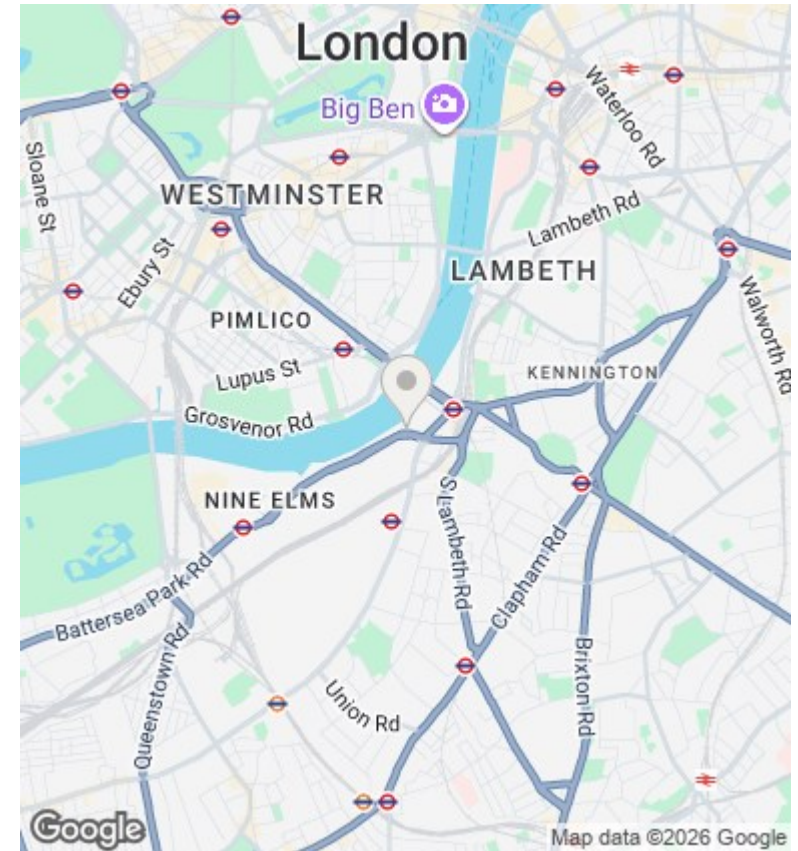
Viewings by arrangement only.  
Call 02077225022 to make an appointment.

### Council Tax Band

H

### EPC Rating:

B



Energy Efficiency Rating		
	Current	Potential
Very energy efficient - lower running costs		
(92 plus) <b>A</b>		
(81-91) <b>B</b>	83	84
(69-80) <b>C</b>		
(55-68) <b>D</b>		
(39-54) <b>E</b>		
(21-38) <b>F</b>		
(1-20) <b>G</b>		
Not energy efficient - higher running costs		
<b>England &amp; Wales</b>	EU Directive 2002/91/EC	